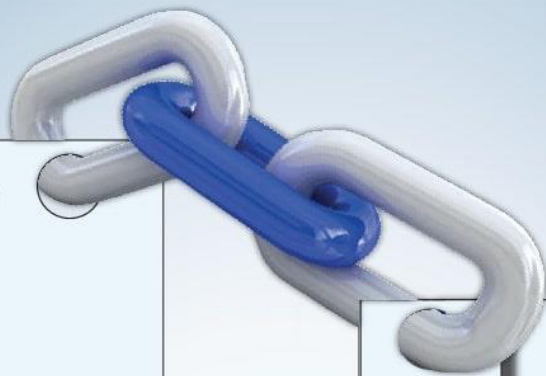


OUR PARTNER



	IRAN SAMEN
	APS CO.
	TNA
	NAMVARAN
	IDS CO.
	OEOC
	IGC
	BPMIC
	APADANA GROUP
	BEHTAZ SYSTEM

	BARSAN
	AZAR SIMAB
	AZARAB CO.
	MARAM
	PANDAB TADBIR
	PANAHSAZ
	TAKAPO
	PETROSTRUCTURE CO.
	JIS COMPANY



FIELDS OF WORK



Ports and Offshore



Dam and Water resources



Transportation and Logistics



Structure



Supervision



Road, Bridge, and Tunnel

Services

- Feasibility Studies
- Assessment and Preliminary Studies
- Planning, Design and Consultancy of Projects
- Supervision of Design and Construction
- Management and Project Control
- Impact Assessment Studies
- Economic Assessment Studies
- Value Engineering Studies
- Strategic Planning
- Business Plan Preparation and Studies

Qualifications

SIG Company has been qualified by deputy management & Planning Organization in carrying out consulting services in the following fields:

- Construction of port & offshore structures
- General management
- Road construction
- Railway
- Traffic & Transportation
- Dam construction
- Irrigation & drainage
- Civil
- Strengthening
- Energy (combined heat & power generation)
- Construction of dwelling houses, commercial & office buildings, and industrial and military buildings
- Management



Geotechnics



Environment



Energy Oil and Gas



Management

Organization Chart

SIG enjoys a flexible organization chart, which has developed proportionate to its growth. Considering this as well as developmental strategies. Company's organizational chart has been designed in order to guarantee company's rapid growth and satisfy the needs of the customers to its maximum.

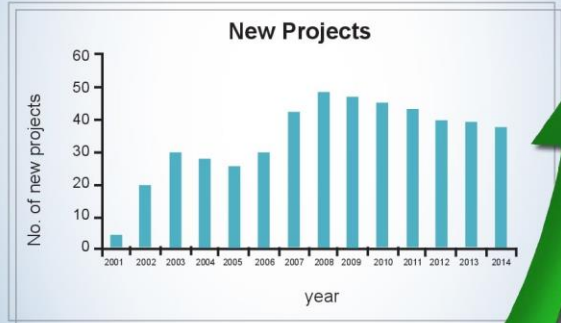
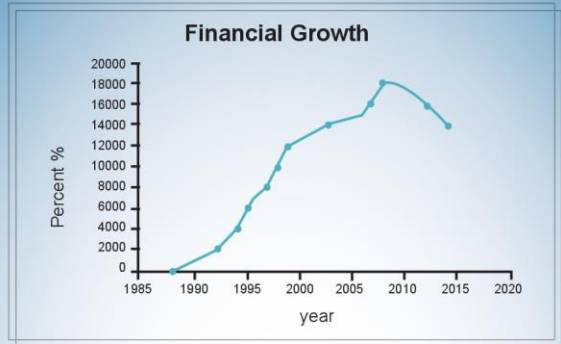
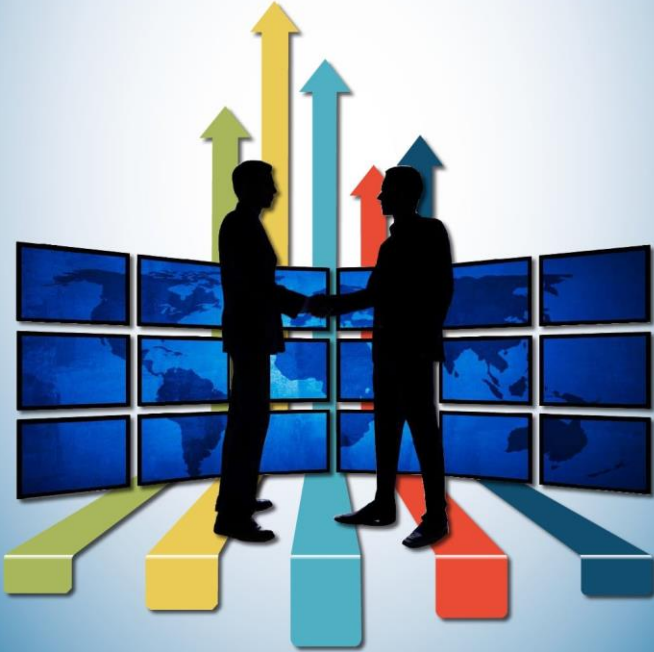
As a result, various chart have been pre-designed for different growth periods



Growth In SIG

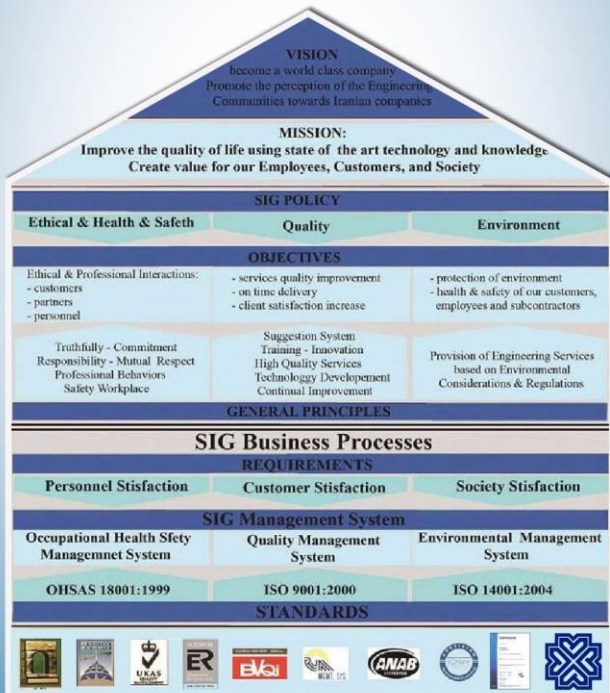
Samen Industrial Group has experienced significant growth during the recent years and he thus gained considerable respect in the world of engineering.

Comparing the company's growth curve with that of organizational maturity reveals that the company is at the stage of rapid growth through adopting executive measure in line with developmental principles. Companies management has been able to maintain its rapid growth, which lies in financial issues, human resources, and the number of projects. SIG's strategy in enhancing efficiency has resulted in its involvement in great projects. Diagram relating to human resources reveals the growth in the number of employees. Number of personnel with high educational degrees (PhD and Masters) signifies the high qualification of employees active in this Company.

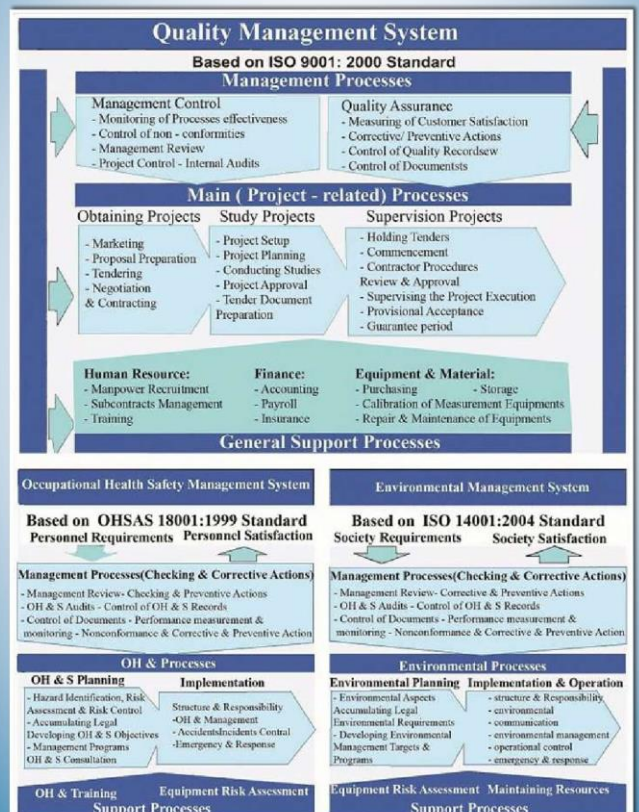


Quality Management System

SIG quality management system (QMS) has been designed based on ISO 9001:2000 Standard & project management approach. Due to the design of this system, SIG business processes have been established with appropriate connections. These processes have been categorized according to the management processes, main or project related processes and general support processes. Measuring and monitoring of these processes have been done with specific instruction. SIG management has been committed to execution of this system through establishment of the quality management department. This department works under the direct supervision of the managing director. Our main quality objectives include promoting the quality of services, timely completion of works, and increasing the customers' satisfaction.



SIG has designed and developed different managerial systems based on its vision and mission, in the field of engineering activities. The systems include quality management system environmental management system, and employment safety and health management system. These systems have been designed based on international standards and our main objectives are improvement of customers, personnel and the society satisfaction. As it is shown in the illustration, SIG business processes have been established according to the managerial processes, main processes and general support processes. In 2005, SIG succeeded in obtaining quality management certificates from four international organization in the field of energy, oil and gas, civil engineering and management.





Ports and Offshore Department

Ports and offshore department that is one of SIG's pioneers and the most capable team active in ports and offshore engineering, enjoys exceptional potentials and capabilities in port design and planning as well as in the design and construction of offshore structures.

Purposeful team work, innovative and professional approach, creates high quality services that include the main principles of this team.

These in conjunction with highly competent and motivated employees and state-of-the-art equipments have led SIG to participate in development of many Iranian ports and to provide various valuable technical and engineering services for clients.

SIG is honored to be the first Iranian company conducting Iranian commercial ports Master plan studies for port and maritime organization



Fields of Work

- Master plan studies of ports and coastal areas
- Ports macro management studies, feasibility studies, site location and layout of coastal facilities
- Port economic studies, planning and port management
- Organization plans, port maintenance and productivity promotion
- Hydraulic and hydrodynamic studies
- Area improvement studies and optimization of performance system and software in ports
- Study & design of coastal protection systems
- Design of offshore structure, oil platforms, and oil and gas facilities
- Study and design of onshore structures, storage and dock
- Study and design of port infrastructures, berth, breakwater, slipway and dolphin
- Master plan of monitoring and coastal modeling
- Development plants of free trade zones.

List of Major Projects

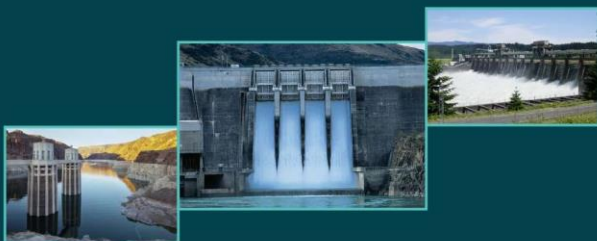
- Iranian commercial ports master plan studies; phase I&II (12 ports with up to 150 million tons of annual throughput)
- Basic & Detailed design of Mahshahr oily port terminal (12 million tons/year export/import oil products)
- Master Development Plan of Tombak area including 3 LNG plants (upstream and midstream) with production rate of 36 MTPA
- Design of South Pars outfall system (phases 9&10) – EPC Contract
- Supervision and study of maritime facilities engineering documents of IRANLNG project in Tombak
- Minor commercial port organization plan (63 ports)
- Productivity promotion plan in Iranian Fishing Ports (42 ports)
- Hydraulic modeling of south Pars water intake (phases 9&10)
- Chiruyeh fishing port studies
- Sediment studies of Konarak desalination plant intake basin
- Studies of Arvandkenar search and rescue center
- Javad-ol-Aemeh fishing port development plan
- Pozm fishing port development studies
- Suza fishing port studies Hendijan commercial port studies
- Sajafi commercial port studies
- Arvandkenar commercial port studies
- Chuebde commercial port organization plan
- Hasineh fishing port studies
- Design of helicopter pad in Imam Khomani Port pilot berth
- Feasibility Studies for constructing special mineral berth in Bandar Abbas
- Design of GRP buoyage in Iranian major port
- Khamir Port Studies in Hormozgan Province



Dam and Water resources Department

The importance and the role of water in sustainable development of all societies is the reason for the early establishment of Dam and Water Resources Department in SIG Company.

Our competent, highly motivated employees, coupled with state-of-the-art equipments create high quality engineering services. Having valuable experiences in conducting feasibility and detailed studies and providing executive drawings for the construction of dams has developed the capability of this department in carrying out more specialized services in this field. In addition, water resources planning, river engineering services, sediment studies, design of urban water facilities, and irrigation and drainage are among the specialized services provided by Dam and Water Resources Department.

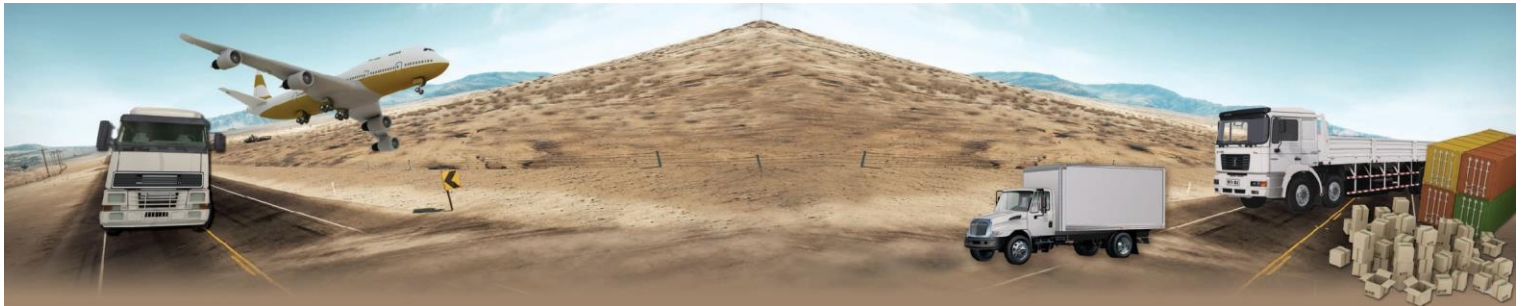


Fields of Work

- Dam engineering and hydroelectric project, design of concrete and earth dams, site selection, and power plant design
- River engineering, river training studies floodplain zoning studies, determining floodway and flood fringe, dredging studies, and navigation in rivers
- Design of hydraulic structures, water transfer systems, stilling basing, ground and aerial water storage tanks
- Design of sanitary and storm sewers and sewerage system, conducting studies relating to irrigation and drainage, pressure irrigation networks, and drainage networks
- Groundwater studies and watershed management
- Value engineering studies of dam and water resource projects
- Water resources quality and quantity management studies

List of Major Projects

- Phase I studies of Hassan Nooran reservoir dam (in height of 23m) in Oshnaviye
- Phase I&II studies of Khorabloo reservoir dam (in height of 23 m) in Makou.
- Studies for the development of Apure-Orinoco River area in Venezuela
- Phase II studies of Karoon River dredging operations at the vicinity of Ahvaz and Khoramshahr (10.5 MCM)
- Feasibility studies of hydropower plants in Maroon and Allah basin- Khuzestan
- Phase I studies of Kondok Reservoir Dam-Khuzestan
- Studies for determining suitable dredger for Dez dam
- Identification studies of reservoir dams of Roodzard, Zizard, and Abgela in Khuzestan
- Identification studies of chain hydropower plants of Roodzard, Poto, and Seidoon in Khuzestan
- Phase I&II complementary studies of Ladiz artificial recharge Sistan&Baluchestan
- Qualification studies of Kondok Dam and water resources-Khuzestan
- Floodplain Zoning & Determination of Floodway & Flood Fringe in some parts of Mereg River in the west of Iran
- Floodplain Zoning & Determination of Floodway & Flood Fringe in Javanrood, Paveh, and Bayangan Rivers
- Repairing plan for the stilling basin and the training dike of Mil and Moghan Dam-Ardebil
- Site selection for medium hydropower plants in Iran
- Value engineering studies of culvert structure and earth dam spillway in Seir-e Harooni Valley in Shahrekord



Transportation and Logistics Department

During the recent century, as a result of population increase and urban development, transportation engineering has found a special role in people's lives. Benefiting from advanced technology and Logistics knowledge in various fields of transportation and traffic engineering, Transportation and Logistics Department in SIG Company has acquired valuable experience and expertise in this field. Multidimensional conception in planning and in conducting studies, creativity, innovation, integration, and determination in carrying out activities are the main consideration of transportation and logistics department. Highly competent and dedicated employees graduated from distinguished national and international universities have created valuable potentials in providing high quality services for many clients in various fields including urban, railway, road, air, and marine transportation. Planning and design of national distinguished projects such as 120 km Tabriz-Uremia Highway traffic studies, Iranian Transit forecasting, and Khuzestan Steel Company transportation comprehensive studies clearly indicate the extent of the capabilities of this department



Fields of Work

- Planning of Transportation systems, planning of road, railway, road, air, pipeline and marine systems
- Transportation systems management, travel demand management, crisis management, superstructure management, and intelligent systems
- Transportation economic studies, pricing for the use of infrastructures, analysis of projects risks, evaluation of transportation projects
- Urban transportation studies, transportation master plan, urban organization, public transportation system, and finding location for facilities
- Traffic engineering, organization of routes, local traffic management, and parking comprehensive studies
- Designing transportation terminal, design and site selection for ports, airport and terminals for transportation of loads and road and railway passengers, and network design
- Value engineering in transportation sector

List of Major Projects

- Provision of consulting engineering services related to road and railway; phase I, II, & III studies, for Khuzestan Steel Company
- National development plan for Jask commercial-industrial center
- value engineering studies of Kermanshah-Khosravi railway
- Preparation of ports and marine tariffs, dues, and changes
- master plan of site selection for CNG stations and conversion site in Iran
- Organizing the existing condition of material flow and designing a model for material flow of Iranian national-industrial steel group in view of development plans
- management and planning of local transportation in Khuzestan Steel Company
- Studies of Iranian ports development general strategy
- Studies of Iran's strategic economic situation in providing transportation corridors
- Site selection for new ports in South coasts of Iran
- Forecast of maritime traffic in north and south waters in Iran
- Study of black spots and road accidents in Iran
- Evaluation studies for the feasibility and necessity of constructing railway over Urmia Lake
- Transportation studies of Shahid Kalantari causeway
- Economic evaluation of Shahid Kalantari freeway project
- Feasibility study for constructing the 2nd berth for transportation of minerals in Bandar Abbas area
- Feasibility study of navigation in Karoun waterway from technical and economic point of view
- Supervision on pavement construction operation of roads for the development of Shiraz economic zone
- Phase I studies of Yadegare Imam Highway continuation in Length of 30 km
- Study of import and Export of ironware to Imam Khomeini port during the last 5 years



Structure Department

Activities undertaken by Structure Department in SIG include planning and design activities, feasibility and comprehensive studies, and the design and management of structural projects.

Highly competent and motivated employees together with the state-of-the-art equipments create high quality services for clients.

Precision and dynamicity in planning, innovative thoughts, and team work are considered as the key principles in carrying out innovative engineering services.

Experience coupled with expertise in different field and disciplines has encouraged clients to work with this department.

Design of hangar for Boeing 747 in Imam Khomeini airport is an example of a national project performed by SIG Structure Department.



Fields of Work

- Design of buildings and industrial structures
- Design of river bridges and at-grade intersections
- Design of high-rise structures
- Design of special structures and hangars
- Design of silo and cement manufacturing plants
- Evaluating, strengthening and retrofitting structures
- Design of steel and concrete buildings
- Architectural design of buildings and landscaping

List of Major Projects

- Design of hanger & annex structure for Boeing 747 in Imam Khomeini airport
- Basic and detailed studies of Urmia Lake Causeway
- Design of 40,000 m2 building and 50,000 m2 logistic site of National Iranian Gas Export company (NIGEC) in Tombak
- Design of helicopter pad in Imam Khomeini Port
- Design of Ro-Ro berths in Assaulouyeh Petrochemical Port
- Conducting feasibility studies for passing traffic over Karoon 3 Lake and designing its floating barge
- Saipa Press Foundation design
- Studies regarding the construction & installation Milad's Tower head structure weighing 20,000 tons & consisting of 12 floors
- Basic design of Ghazian bridge in Anzali Port
- Development studies of Island in Urmia Lake
- Basic design of Mobin Petrochemical water intake
- Designing the landscaping of gas supply station in Kish Island
- Analysis and design of approach bridge and sheet pile for construction of middle pier and foundation of 8th Ahwaz Cable Stayed Bridge
- Design of bridges for at-grade intersections of Abadan belt line and railway with KSC
- Provision of engineering technical consulting services in 'Design of MDF plant of 'Yildiz Integre Iranian Company' project
- Strengthening of three 1st generation bridges in Tehran
- Supervision on renovation of old sections of County 19 in Tehran Municipality (Baharan)
- Strengthening of Tana Bridge in Kenya
- Seismic improvement studies of Tehran Imam Khomeini Mosalla Dome project
- Evaluating, strengthening, and improvement of bridges

Supervision Department

Design, consulting, construction, and supervision are recognized as the essentials in engineering projects. By founding the Supervision Department, SIG Company has expanded its role in the field of engineering activities. Benefiting from capable and proficient specialists as well as advanced technological support, this department has become active in many engineering fields. Supervision Department in SIG demonstrates significant potentials and capabilities by offering a wide range of services including ports and coastal projects, urban at-grade intersections, road construction and geotechnical projects. Supervision on the construction of shahid Rajaei port development & Pars service port are examples of national projects carried out by Supervision Department in SIG Company.



Fields of Work

- Environment management
- Soil improvement and projection, soil use investigations
- Water pollution control in dams, basin areas, and natural water flows
- Environment impact assessment of projects
- Nature and habitat management
- Environment engineering
- Management of energy impact assessment
- Quality management studies of ground and surface waters
- Projects environmental assessment studies
- Environmental studies of projects and pollution distribution

List of Major Projects

- Supervision on the construction of breakwaters and jetties 8&9 in Pars Service Port
- Supervision on construction of Shahid Kalantari causeway
- Supervision on construction of 8,000,000 ton IRAN LNG project in Tombak
- Supervision on rough trading operation IRAN LNG site
- Supervision on segment 3 of Mohr-Lamerd highway
- Supervision on construction of hanger for Boeing 747 in Imam Khomeini airport
- Supervision on development plan of Shahid Rajaei Port complex
- Supervision on improvement of Assalouye fishing port
- Supervision on construction of Chirouyeh Fishing Port
- Supervision on development of South Pars Intake, phases 9&10
- Supervision on construction of Javad-ol-Aeme Fishing Port
- Supervision on construction of Hassineh Fishing Port
- Supervision on construction of Noor Highway including 7 bridges
- Supervision on construction of segment one of Saray-Gamichi Main Road
- Supervision on intake basin repairing plan of Konarak desalination plant

Road, Bridge, and Tunnel Department

Roads, as the main connection means, have vital role in the development of a country. Road, bridge, and tunnel department in SIG Company follows the abovementioned approach benefiting from members with impressive background each bringing to the company several valuable years of experience within the industry. Creativity and innovation in designing, perseverance and team work in the execution of works and moving towards most recent fields and disciplines include the main activities of this department. Safety, convenience and aesthetics together with major technical criteria, environmental and social issues, and interaction with other specialized teams are key consideration that have encouraged clients to work with this department, design and study of shahid kalantari freeway and supervision on several at-grade intersections in Tehran are some examples of the activities of Road, Bridge and Tunnel department in SIG company.



Fields of Work

- Feasibility studies of road, bridge, and railway projects
- Geometrical design of freeways, intercity roads, urban and rural roads
- Geometrical design of road and railway
- Pavement design of road, railway, and runway
- Study of safety and road and railway signs
- Geometrical design of level and at-grade intersections
- Design of bridge and crossover, river bridges, at-grade intersections, floating bridges and suspension bridges
- Study of safety and maintenance of bridges and tunnels
- Study and design of roads and railways
- Control and design of equipments and facilities of tunnels, tunnel ventilation, tunnel lighting and tunnel drainage system
- Design studies of underground structures

List of Major Projects

- Preliminary and phase I&II of Shahid Kalantari freeway
- Strengthening of Three 1th generation traffic bridges in Tehran
- Design of KSC at-grade intersections
- Design of approach bridge and sheet pile for construction of middle pier of 8th Ahwaz cable Stayed Bridge
- Value engineering study of Kermanshah-Khosravi railway
- Designing Shahid Kalantari freeway at-grade intersections
- Studies of signs layout in Shahid Kalantari Freeway
- Study of Hemmat Highway widening in Tehran
- Technical assessment of railway passing from Urmia Lake Causeway
- Safety studies of Iranian roads
- Economic assessment of Shahid Kalantari Freeway project
- Design of bridge for Rozchai and Nazlouchai Rivers
- Basic and detailed design of Urmia Lake Causeway
- Preparation of Iranian roads data bank
- Redesign of Shiraz Subway station
- Design studies of Shahid Kalantari freeway tunnel
- Design of ramps and loops of Noor freeway at-grade intersections
- Phase I&II studies of improving type (D-A) feeder road of road police station from Zanjan-Bijar to Danadi and Takht-e-Soleiman
- Phase I&II studies of type (D-B) of Khoramdare-Hidaj route improvement



Geotechnics Department

In the history of engineering, the main challenge involved the human being and nature and interaction with the soil is the best example in this regard. During the recent decade, along with significant development in engineering science, great achievements have been experienced in geotechnical and geological issues. Geotechnics and Geology Engineering Department in SIG Company has been established based on a multidimensional and knowledge oriented approach. Highly competent and devoted experts in conjunction with highly developed software and hardware equipments has created a favorable atmosphere for this Department to become involved in a vast range of activities including geological, geophysical, and geotechnical studies. State-of-the-art equipment for carrying out field inspections, progressive technical knowledge, and creative solution to the problems have created a sense of trust in the clients to cooperate and work with Geotechnics Department in SIG.

Dynamic compaction of reclaimed lands in south pars area is an example of a major project performed by this Department



Fields of Work

- Geotechnical design of engineering projects, design of various deep and surface foundations and retaining walls
- Geological studies and borrow resources
- Field inspection, excavation, study of the soil in land and sea, and geophysical studies
- Test studies, conducting soil and geophysical tests
- Design and performance of excavation operations and injection
- Improvement studies and land reclamation
- Environmental evaluation of projects and design of pollution control
- Marine geotechnical studies
- Drainage studies of underground waters
- Geotechnical and geophysical studies of bridge and tunnel

List of Major Projects

- Design of land leveling execution operation of IRANLNG site
- Dynamic compaction of lands reclaimed from the sea
- In Assalouyeh (South Pars)
- Studies of tidal land reclamation of Mahshahr oil export port
- Dredging studies and marine Geotechnics of access canal in Mahshahr oil export port
- Redesign of Shiraz subway stations
- Geophysical studies of Tehran-Shomal Freeway
- Geophysical and geotechnical studies of Shahid Kalantari Freeway
- Geophysical studies of Shahid Kalantari Freeway
- Geophysical studies of Sadid Pipe Manufacturing Factory in Imam Khomeini Port
- Geophysical studies of Arvandkenar Commercial Port
- Geophysical studies of Ladiz Artificial Recharge
- Evaluation studies of the loading piles of Urmia Lake Causeway
- Design of pile and pile group (Dolphin) for the 80,000 ton ship bear in Mahshahr oil export port
- Geophysical studies for the construction of Malayer stel company
- Geophysical studies of IRANLNG export port
- Design of recreational site in Pars Special Zone



Environment development

Along with human developments, concerns were raised regarding resources and the environment and led to the reinforcement of sustainable development. Environment is the main concern of sustainable development. Environment is the main concern of sustainable development and is in close interaction with various engineering areas. Environment department in Samen Industrial Group has been established in view of the necessity for achieving sustainable development from a technical and engineering point of view. Enjoying highly experienced and committed experts, environment development in SIG Company is capable of carrying out a wide range of study project in the field of SIG Company environment engineering. Creative solutions to the problems and integrated team work are considered as the main principles of this department. Accumulation of technical knowledge and experience in various specialized engineering fields has considerably increased the success of this multidisciplinary department. Progressive technical know-how in conducting study project encourages clients to collaborate with environment department in SIG Company. Environmental impact assessment of constructing Shahid Kalantari Driveway that has raised special environmental sensitivities is an example of projects performed by this department.



Fields of Work

- Environment management
- Soil improvement and protection, soil use investigations
- Water pollution control in dams, basin areas, and natural water flows
- Environment impact assessment of projects
- Nature and habitat management
- Environment engineering
- Management of energy impact assessment
- Quality management studies of ground and surface waters
- Projects environmental assessment studies
- Environmental studies of projects and pollution distribution

List of Major Projects

- Environmental impact assessment of constructing Shahid Kalantari Freeway
- Environmental impact assessment of Mahshahr port
- Design of human and industrial wastewater system in Mahshahr oil export port
- Study of Iranian commercial ports environmental impact
- Study of Iranian flashing ports environmental impact
- Qualification studies of Kondok Dam and its water resources in Khuzestan Province
- Environmental impact assessment of Mereg River in west of Iran
- Environmental impact assessment of Javanrood, Paveh, and Bayanga River
- Environmental impact assessment of Iranian commercial minor ports
- Design of industrial and domestic wastewater treatment plant of Mahshahr Oil Export Port



Energy Oil and Gas Departments

Along with development of modern technologies during the recent years, including towards energy related activities has increased to a great extent.

Nevertheless, Major part of energy is yet supplied by fossil, oil and gas.

Establishment of oil and gas department in Samen Industrial Group is based on the role and importance of oil industry in the country. Has created a favorable condition for this department to make great progress in related field.

Oil & Gas Department in SIG is considered as the symbol of development in engineering services in SIG Group.

Benefiting from advanced technology and valuable experiences in the field of onshore, and coastal activities and also highly experienced and dedicated experts, guarantee the success in the department. National project of Mahshahr Oil Export Port development is one of the most major projects being carried out by the Oil and Gas Department in SIG



Fields of Work

- Feasibility studies of oil, gas, and energy projects
- Design of oil and gas pipelines, reservoir, desalination facilities, and power plants system and equipment
- Oil and gas safety projects
- Technical and economic evaluation of oil, gas, and energy projects
- Planning and consulting CHP projects
- Energy protection studies
- Study of energy consumption optimization, radiation, and dispersion
- Planning the system of energy supply and transfer
- Consulting the simulation of energy static and dynamic conditions

List Of Major Projects

- PMC Of Miandoab Petrochemical
- PMC Of Qeshm Refinery
- Tombak Development Master Plan
- Mahshahr Oil Export Terminal Revamping
- Feasibility Studies Of Developing CHP Systems In Oil Industry
- Feasibility Of Passing Facilities From Urmia Lake Causeway
- Biogas Development Feasibility Study In Khozestan Province

Management Department

Management department in SIG Group is active in the provision of management consulting services, training and implementation of management system with the intention of promoting the efficiency in the country. Enjoying the most complement experts in the field of management and economy, management department in SIG seeks to create added value for its clients. The following makes this department distinct from others:

- Management consultancy knowledge along with engineering experience
 - End-to-end solutions and "hands on" policy
 - Enjoying International network and experience
- Conducting projects through creating joint teams with client experts
 - Access to Industry Experts in projects
 - Creating network of experts

List of Major Projects

- Implementation of management control system for IMIDRO
- Design and implementation of crisis management system in Imam Khomeini Port
- Restructuring of Sadra Company with the cooperation of Roland Berger
- Tax processes standardization for Tax Affairs Organization
- Car recycling business plan and management contract (MC) in Iran
- Strategic management services for Shahr investment company
- Project management and planning services for Tamin-e-Maskan-e Javanan Company
- Preparation of a business plan and provision of railway & recycling industry technical-economic justification for HEPCO
- Project failure studies and proposing improvement projects for ASTO car manufacturing and industrial structure company
- Design and implementation of strategic management system for ITOK Iran Company (EPC)
- Design of project management system for ITOK Iran Company
- Design and implementation of strategic management system for SIG Group
- Studies and design of Imam Khomeini Port contingency plan
- Design and implementation of claim management system for Tombak IRANLNG project
- Leadership and hosting the fourth national conference on Port Safety
- Design of managers competence model
- Assessment of the basis of EFQM model for Khorasan Regional Company
- Preparation of a standardized model for the instruction of crisis management system in three groups of public places
- Studies and design of Business Continuity Plan (BCP) in Imam Khomeini Port

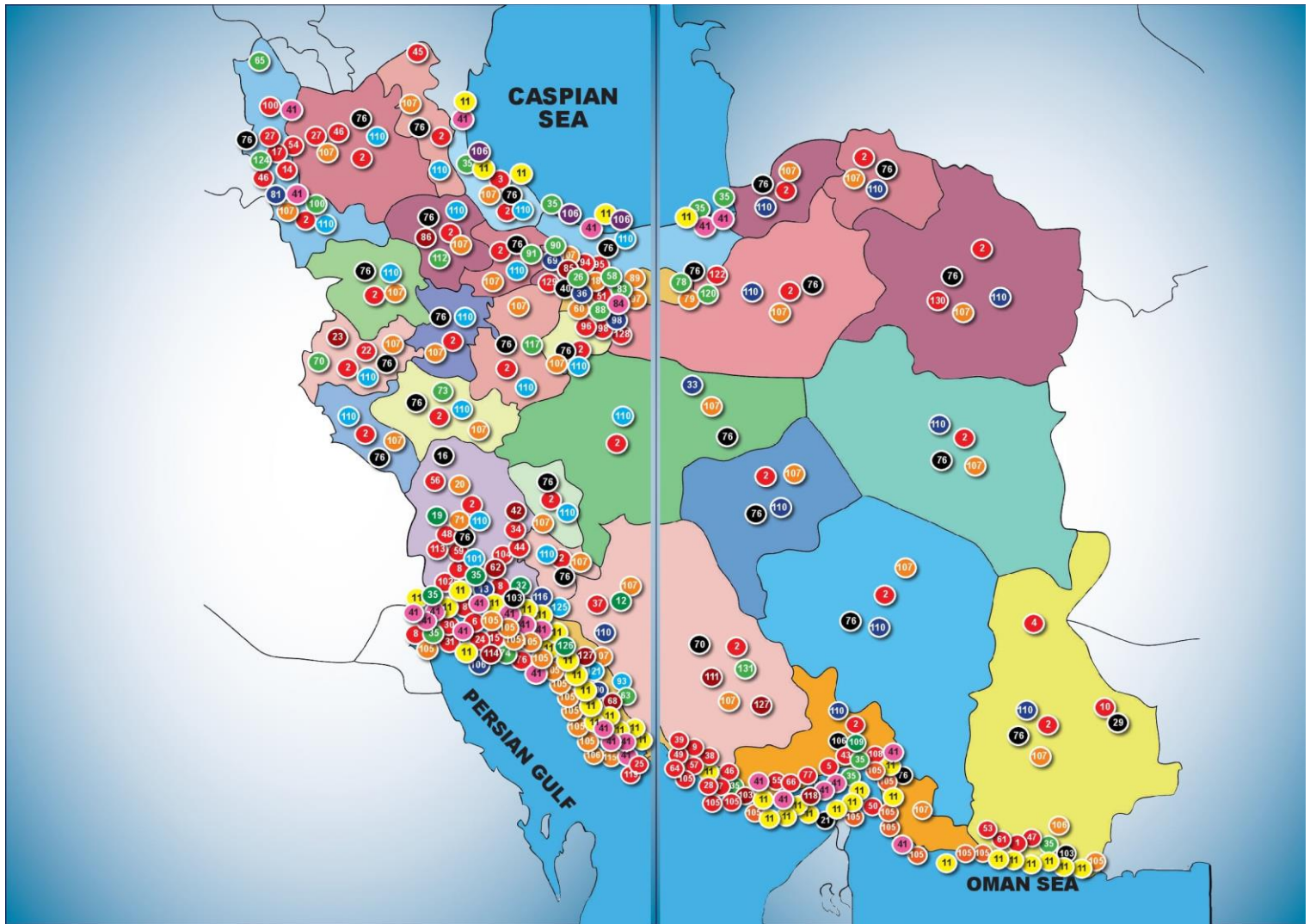
Fields of Work

- Strategy and leadership
- Restructuring
- Strategic Planning
- Implementation of Strategies
- Management Control System
- EFQM Model Deployment
- Change Manage System
- Operation management
- Value Engineering
- Organization Crisis Management
- Business Continuity Management
- Project Management
- Risk Management
- Supply Chain Management
- IT Management

Management and Improvement of Organization Processes
 Reengineering of Organization Processes
 Design Integrated Organization Architecture
 IT Strategic Planning
 Customer Relationship Management (CRM)

• Organizational Development and Human Resources
 Change Management
 Succession Management System
 Educational Needs Assessment
 Pathology from Organizational Development Point of view
 Human Resources Strategic Planning
 Performance Assessment System

• Financial Management
 Financial Statements Analysis
 Credit Risk Management
 Feasibility and Technical-economic Justification
 Development of Investable Packages



INTERNATIONAL PARTNERS

